



Innovative technology for a better life

*for beds and armchairs*

**Single drives**



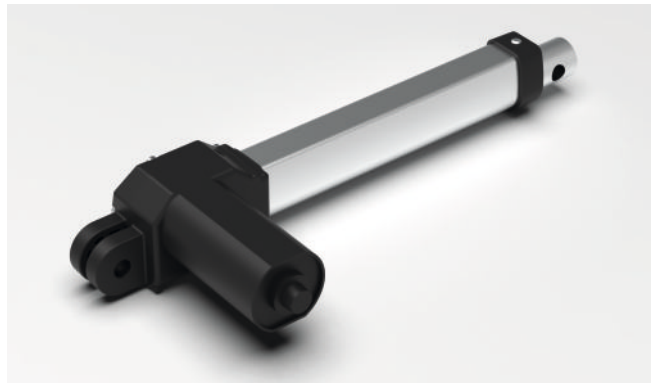
**VSA-Series**

# VSA-10

Our single drive VSA-10 is particularly popular in the upholstered furniture industry for electrically adjustable designer armchairs and in the bed sector as a neck adjustment motor.

Due to its small installation dimension from 120mm + 25mm stroke and its small width, it offers product designers an extremely large freedom of design.

For applications with memory or sequence function, the VSA-10 can optionally be equipped with up to two hall sensors.



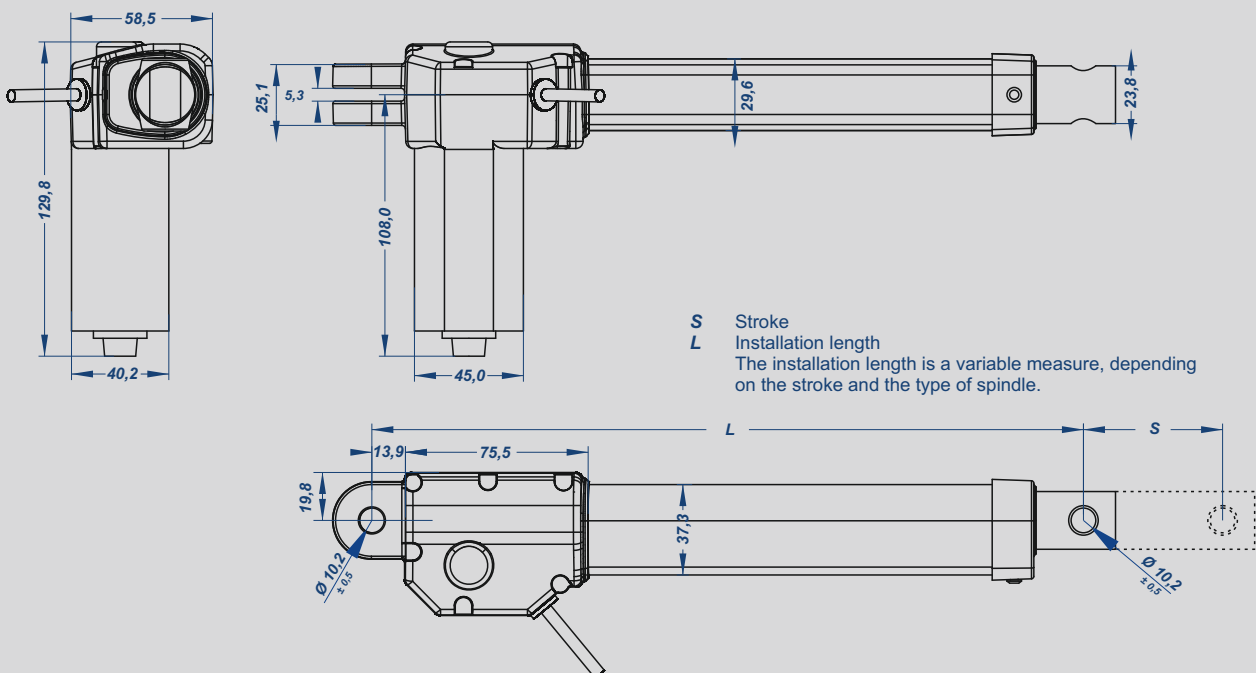
## Technical Data

Drive type	single drive
Stroke pipe clevis	hole 10mm
Gear clevis	fork head with hole 10mm and slot 5mm
Permitted pushing force*	3.000N
Permitted pulling force* (stroke pipe fixed with spindle screw)	2.000 N
Maximum self-locking*	3.000 N
Adjustment speed* (without load)	7,7 mm/s
Adjustment speed* (with load)	5 mm/S
Maximum adjustment speed** (without load)	up to 29 mm/s
Minimum installation length (120mm + min. stroke 25mm)	145 mm
Maximum installation length (140mm + max. stroke 300mm)	440 mm
Rated voltage	24-29 VDC
Protection class	III
Protection dregree	IP 20
Mode of operation	intermittend duty 2/18 min.
Stroke limitation	limit switches (micro switch)
Colour of housing	black
Transport and storage temperature	from -20°C to +50°C
Operating temperature	from +10°C to +40°C
Relative humidity	from 30% to 75%

\* = Drive configuration 1: (preferred type) spindle lead 3mm, 1-worm (other drive configurations upon request)

\*\* = Depending on drive configuration

## Dimensions



# VSA-20

Our drive series VSA-20 is suitable for motorized adjustment of beds and upholstered furniture.

Due to its great power of up to 6,000 N and its small installation dimensions from 130mm + 25mm stroke, the VSA-20 is very popular in modern recliners as the main drive system for the stand-facility.

For applications with memory or sequence function, the VSA-20 can be optionally equipped with up to two hall sensors.



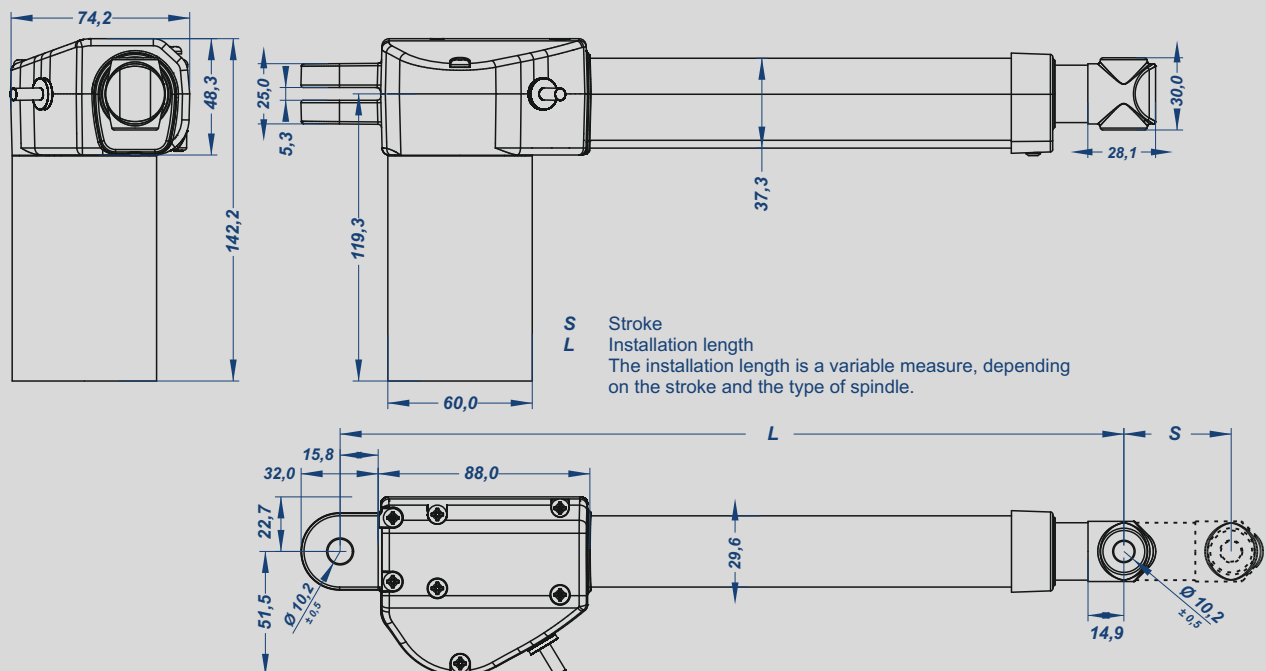
## Technical Data

Drive type	single drive
Stroke pipe clevis	hole 10mm
Gear clevis	fork head with hole 10mm and slot 5mm
Permitted pushing force*	6.000N
Permitted pulling force* (stroke pipe fixed with spindle screw)	4.000 N
Maximum self-locking*	6.000 N
Adjustment speed* (without load)	4,5 mm/s
Adjustment speed* (with load)	3,9 mm/S
Maximum adjustment speed** (without load)	up to 44 mm/s
Minimum installation length (130mm + min. stroke 25mm)	155 mm
Maximum installation length (180mm + max. stroke 400mm)	580 mm
Rated voltage	24-29 VDC
Protection class	III
Protection dregree	IP 20
Mode of operation	intermittend duty 2/18 min.
Stroke limitation	limit switches (micro switch)
Colour of housing	black / metal
Transport and storage temperature	from -20°C to +50°C
Operating temperature	from +10°C to +40°C
Relative humidity	from 30% to 75%

\* = Drive configuration: (preferred 2.600-type) spindle lead 3mm, 1-worm (other drive configurations upon request)

\*\* = Depending on drive configuration

## Dimensions



# VSA-30

The VSA-30 is a particularly quiet, robust and powerful single drive that is ideal for motorized adjustable slatted bases and box spring beds. It can optionally be equipped with hall sensors. In beds with expandable double drive, the VSA-30 is used as a pluggable drive for neck and foot section adjustment. The proven technology, high-quality components, controlled quality and a multitude of system extensions make it the most frequently used single drive from our product range. Compared to double drives, adjustable slatted bases can be much better ergonomically designed with single drives.



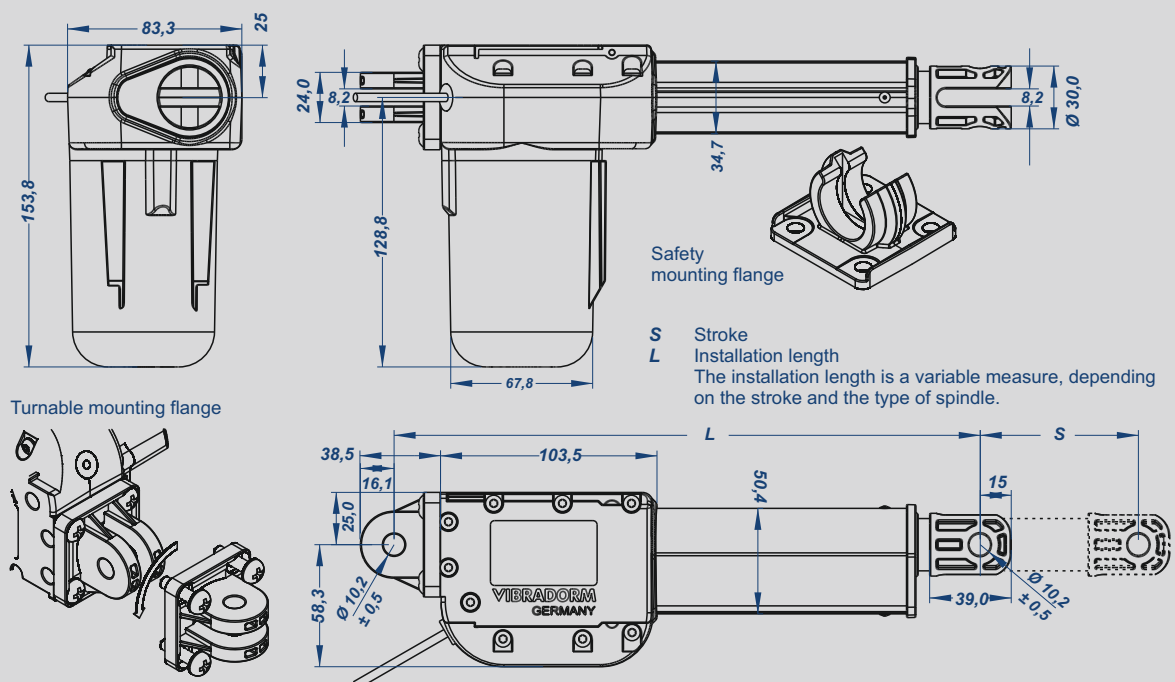
## Technical Data

Drive type	single drive
Stroke pipe clevis	fork head with hole 10mm and slot 8mm / only with hole 10mm
Gear clevis	fork head with hole 10mm and slot 8mm
Permitted pushing force*	6.000 N
Permitted pulling force* (stroke pipe fixed with spindle screw)	4.000 N
Maximum self-locking*	6.000 N
Adjustment speed* (without load)	4,3 mm/s
Adjustment speed* (with load)	4,0 mm/S
Maximum adjustment speed** (without load)	up to 11 mm/s
Minimum installation length (175mm + min. stroke 25mm)	200 mm
Maximum installation length (180mm + max. stroke 800mm)	680 mm
Rated voltage	24-29 VDC
Protection class	III
Protection dregree	IP 20
Mode of operation	intermittend duty 2/18 min.
Stroke limitation	limit switches (micro switch)
Colour of housing	black
Transport and storage temperature	from -20°C to +50°C
Operating temperature	from +10°C to +40°C
Relative humidity	from 30% to 75%

\* = Drive configuration 1: (preferred type) spindle lead 3mm, 1-worm (other drive configurations upon request)

\*\* = Depending on drive configuration

## Dimensions



# VSA-31

The VSA-31 is a quiet and slim single drive that is suitable for motorized slatted bases and upholstered furniture.

Thanks to the narrow motor housing, two drives can be mounted easily in opposite directions very closely together, even in confined spaces.

In beds with expandable double drive, it is often used as an additional drive for head and foot section adjustment.

To realize memory and sequence control function, the VSA-31 can be optionally equipped with up to two hall sensors.



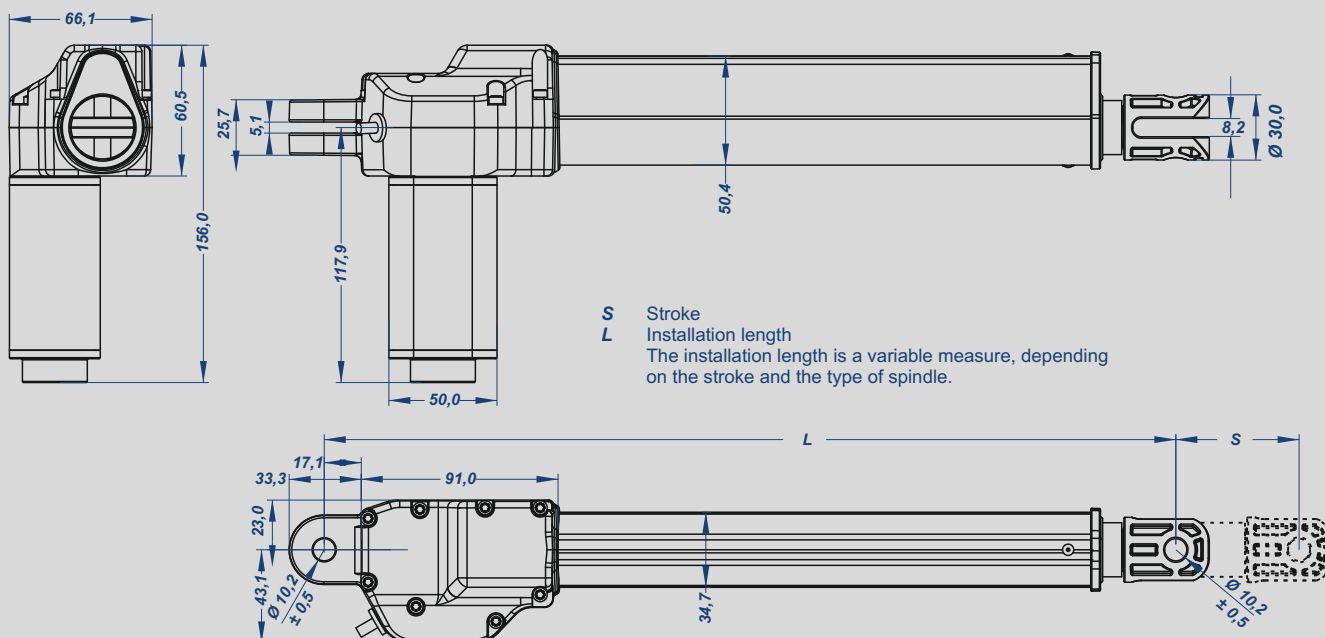
## Technical Data

Drive type	single drive
Stroke pipe clevis	fork head with slot 8mm and hole 10mm
Gear clevis	fork head with hole 10mm and slot 5mm
Permitted pushing force*	4.500N
Permitted pulling force* (stroke pipe fixed with spindle screw)	3.000 N
Maximum self-locking*	3.000 N
Adjustment speed* (without load)	5,0 mm/s
Adjustment speed* (with load)	4,3 mm/S
Maximum adjustment speed** (without load)	up to 47 mm/s
Minimum installation length (155mm + min. stroke 25mm)	180 mm
Maximum installation length (160mm + max. stroke 300mm)	460 mm
Rated voltage	24-29 VDC
Protection class	III
Protection degree	IP 20
Mode of operation	intermittent duty 2/18 min.
Stroke limitation	limit switches (micro switch)
Colour of housing	black
Transport and storage temperature	from -20°C to +50°C
Operating temperature	from +10°C to +40°C
Relative humidity	from 30% to 75%

\* = Drive configuration: (preferred type) spindle lead 3mm, 1-worm (other drive configurations upon request)

\*\* = Depending on drive configuration

## Dimensions





## System upgrades

Sensor Touch



DB-Basic series



CDL-BF & CDL-CF series



CDL-C series



Trend Collection series



operation by app



attachable control box



Bluetooth  
SMART



extension control box



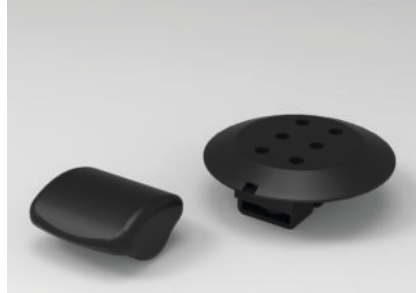
VRT & VRM massage series

to fix on slatted bases and box spring beds

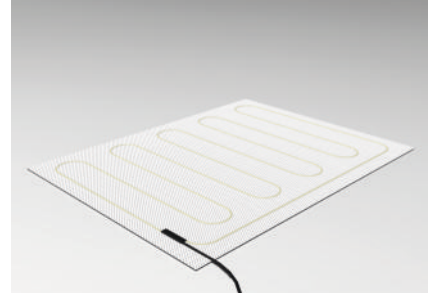


VMU massage series

to build into the mattress



heating pad / foot heating



well being wake-up-light



air pillow

for shoulder relief or lordosis support



rechargeable battery pack



## England Scotland Wales

VIBRADORM United Kingdom  
Arbor Trading Ltd.  
7-11 Haltwhistle Road  
South Woodham Ferrers  
Essex CM3 5ZA

Tel.: +44 1245 / 32 62 10  
Fax: +44 1245 / 32 62 11  
E-Mail: arbor@vibradorm.co.uk

## Belgium Netherlands

VIBRADORM Belgium & Netherlands  
Rob Overkamp  
Sales Engineer

Mobil: +31 622 860 228  
E-Mail: r.overkamp@vibradorm.com

## France Luxembourg

VIBRADORM France  
Bernard Meisse  
Représentant des ventes

Tel.: +352 621 38 35 40  
E-Mail: b.meisse@vibradorm.com

## Italy

VIBRADORM Italia  
SCAAT S.r.l.  
Via Roma, 324  
35030 Cervarese Santa Croce (PD)

Tel.: +39 049 862 9115  
Fax: +39 049 862 9114  
E-Mail: s.tono@vibradorm.com

## Germany

(Headquarter & production)

**Spain Portugal**  
**Austria Switzerland**  
**Denmark Norway**  
**Sweden Finland**  
**Czech Republic Slovakia**  
**Russia Poland Hungary**  
**Estonia Latvia, Lithuania**  
**Turkey**

VIBRADORM GmbH  
Relystrasse 38  
64720 Michelstadt  
Germany

Phone.: +49 6061 94 44 0  
Fax: +49 6061 94 44 10  
E-Mail: sales@vibradorm.de

